

LCD Business Manager Sales Agent Representative for the following companies :

Sodimatel-Pragmatec-Milco-Nixel

Displays, cards, front panels, keyboards, Injection, Components, Sourcing Asia

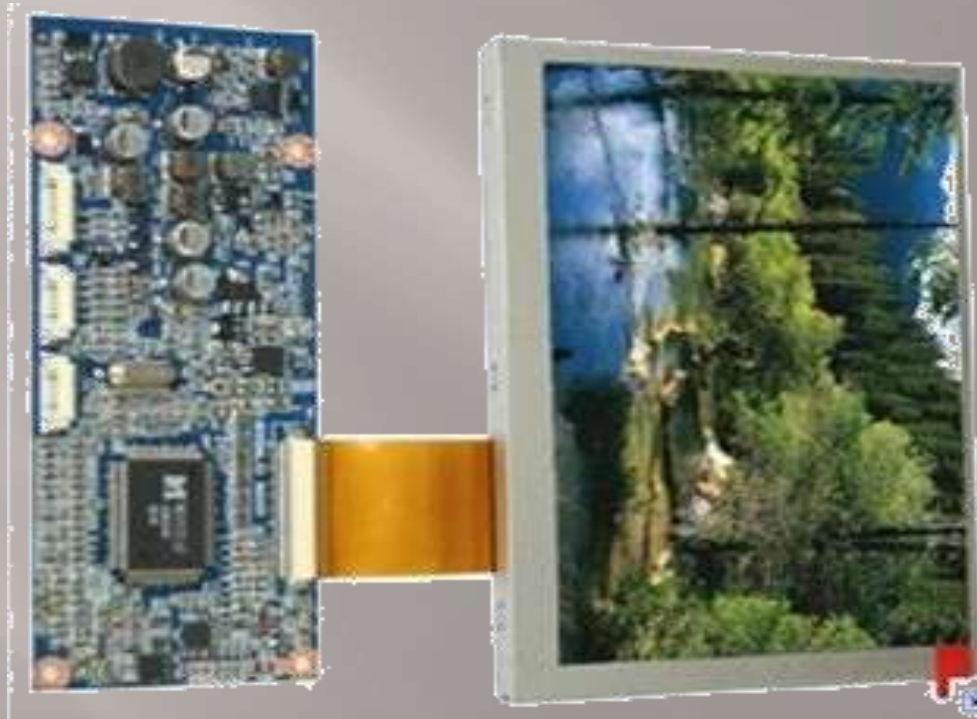
LCD-TFT-OLED-TOUCH-CUSTOM-CPU CORE-ARM LINUX-Embedded software solutions provider "customized" for LCDs and for electronic boards
Electronic design, prototyping, production small and medium series

Contact : jn.ortega@ortelec.com +33.(0) 6 72 21 83 06

Ortelec



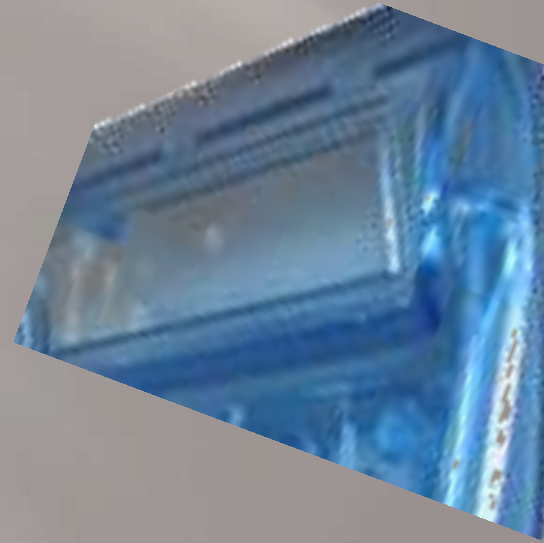
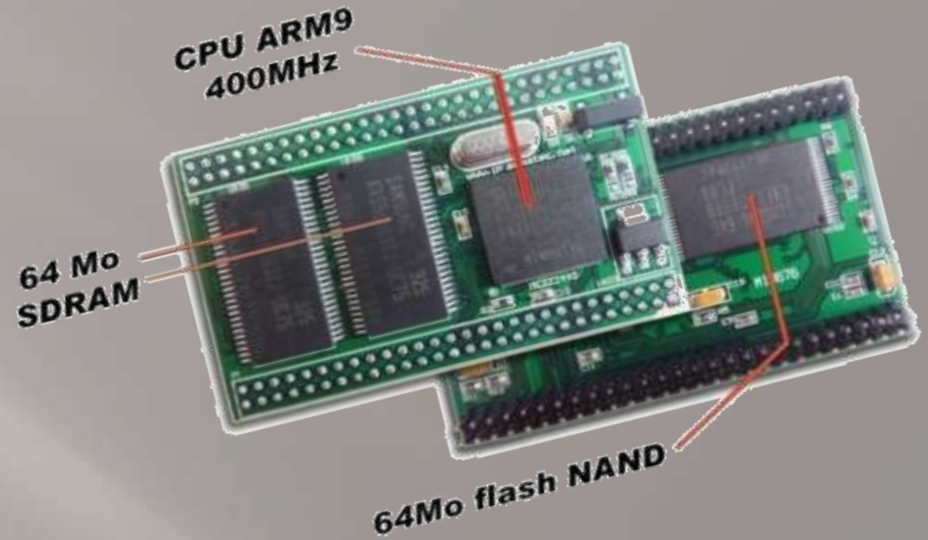
International Display Service - Sales Representative



Tél. +33 (0)6 72 21 83 06 - E-mail : in.ortega@ortelec.com - Site web : <http://www.ortelec.com>

Company ORTELEC - 74, rue Charlot - F-75003 Paris - France
SIRET: 538 836 305 0001 0 RCS Paris - Code APE: 4619B VAT: FR47 538 836 305
Number Register of Commercial Agents: 2012AT0044

Displays, cards, front panels, Injection



**Displays, Electronics cards, Front panels, Injection
Commercial agent, Importer, Distributor,
International Purchasing Office**

Display Solutions Provider

LCD, TFT, OLED, TOUCH PANEL, CUSTOM DESIGN

Displays and Monitors Built

**Electronic components, development and production of
electronic cards customized Linux Embedded Systems,
Design and manufacture of membranes, keypads and front
panels, injection molds aluminum and plastic, Sourcing**

DISPLAYS

Sales representative for SODIMATEL



LCD, TFT, OLED & E-PAPER

Development of LCD Customs

Touch Screen Panels

Displays with Serial interface

RS232, I2C, SPI

ILCD smart displays

Industrial screens and TFT monitors

Low-cost LCD alphanumeric and graphic

Web : www.sodimatel-fasteners.com Email: jn.ortega@ortelec.com



ELECTRONIC BOARDS

Design and manufacture of systems
with ARM / Linux

PIC Module (RS232 / 485, I2C, CAN ...)

Development kits ARM7, ARM9 ...

SODIMMs (CPU, Linux ...)

TFT displays with motherboard Sodimm

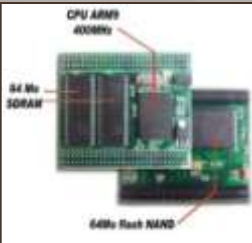
CAN module Sodimm

Wifi key industrial, Super Capa ...

Sales representative for PRAGMATEC



Web : www.pragmatec.net Email : jn.ortega@ortelec.com



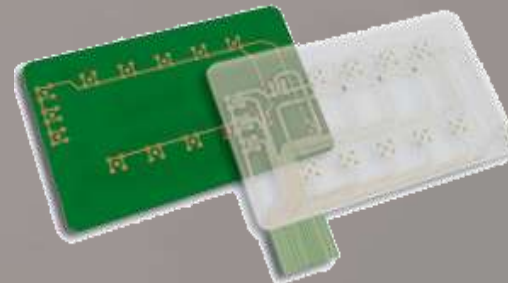
FRONT PANELS

Sales representative for MILCO



Membrane keyboards
Silicone Rubber Keypads
capacitive keyboards
Support sheet metal
graphic Design
screenprinting
thermoforming

Web : www.milco.fr Email : jn.ortega@ortelec.com



INJECTION

Sales representative for NEXEL

NEXEL
Electronics Manufacturing

Design and manufacture of electronic assemblies
3D drawing of your specifications
Stereolithography, laser sintering
Injection mold steel or aluminum
Cutting and shaping of metal parts
Ultrasonic welding, painting techniques

Web : www.nexel.fr Email : jn.ortega@ortelec.com





Part 1: displays

Centralized Industrial and Aeronautical Purchases

SODIMATEL – FASTENERS

Les plus grandes technologies d'affichage

sodimatel
fasteners

display

OLED - EL - LED

LCD - TACTILE

TFT - INTELLIGENT

CUSTOM - MICRO DISPLAY

CONSEIL - DISTRIBUTION - SOURCING

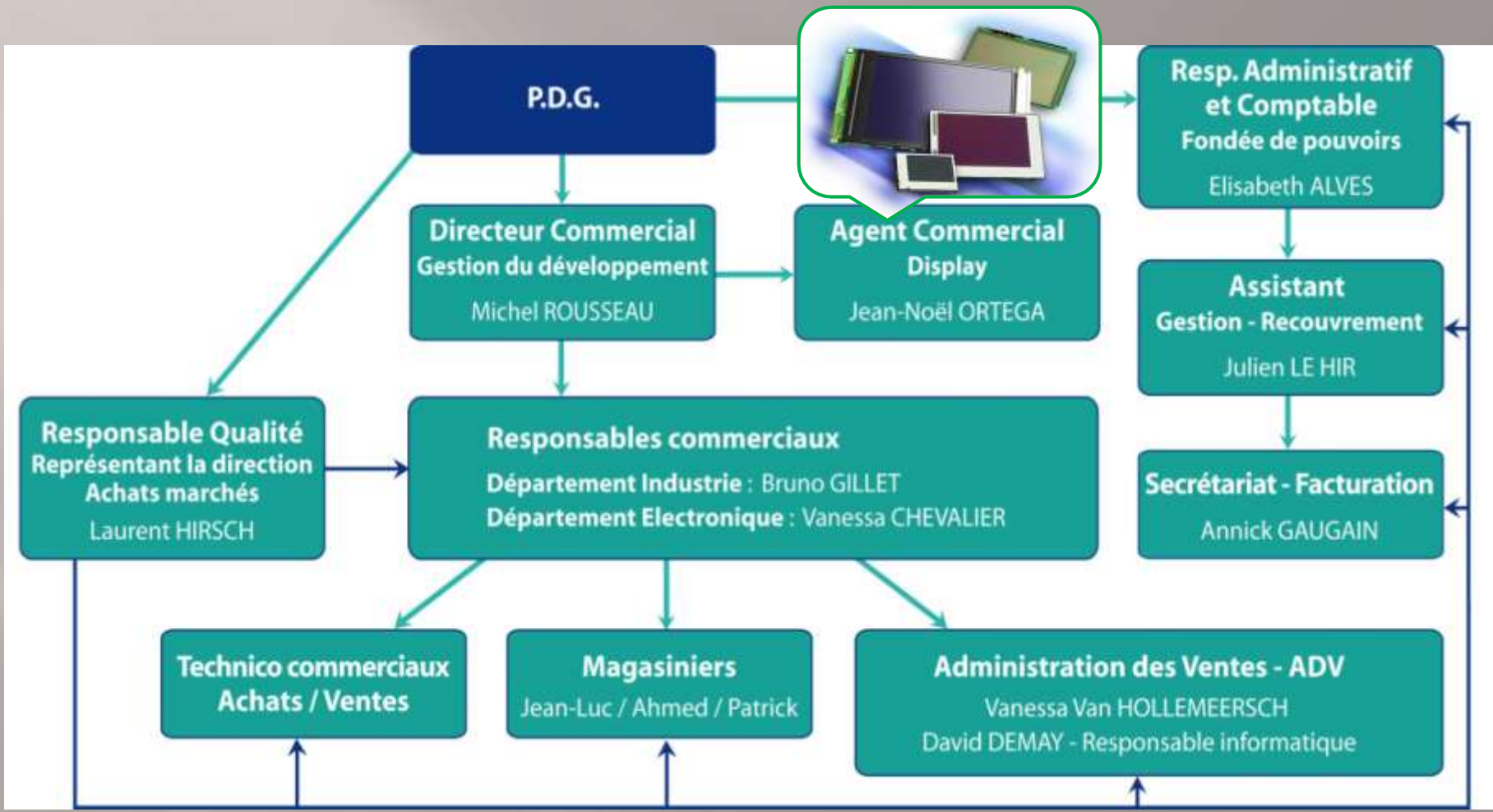
CONSEIL - DISTRIBUTION - SOURCING

www.sodimatel.com

ISO 9001 : 2000 ET AS 9120 : 2004

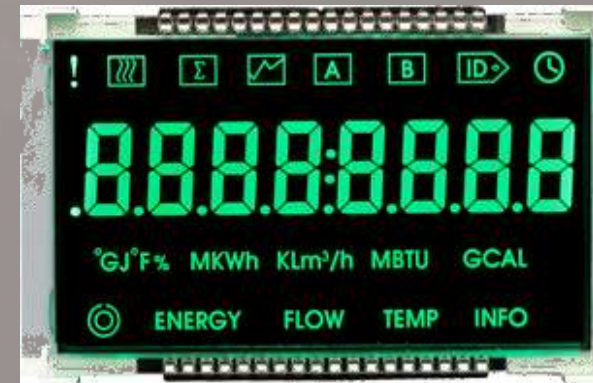
contact : jn.ortega@ortelec.com / 06.72.21.83.06 Web : <http://www.sodimatel-fasteners.com>

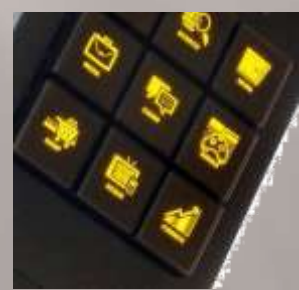
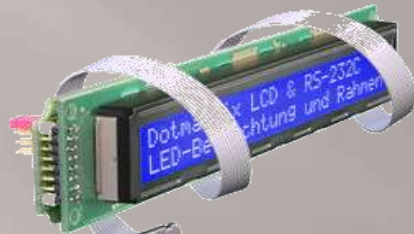
ORGANIZATIONAL CHART



- ✓ Displays LCD
- ✓ Displays TFT
- ✓ Displays OLED
- ✓ Displays AMOLED
- ✓ Displays CUSTOM
- ✓ Displays INTELLIGENT
- ✓ Displays with TOUCH

PANEL	LCD PANELS
MONOCHROME	MONOCHROME ALPHANUMERIC DISPLAYS
	MONOCHROME GRAPHIC DISPLAYS
	MONOCHROME COG DISPLAYS
	MONOCHROME SERIAL INTERFACE DISPLAYS
	MONOCHROME INTELLIGENT DISPLAYS
COLOR	COLOR STN DISPLAYS
	COLOR TFT DISPLAYS 1.8" TO 5.7"
	COLOR TFT DISPLAYS 5.7" TO 12.1"
	COLOR TFT DISPLAYS 15" TO 20.4"
	COLOR TFT INTELLIGENT DISPLAYS
	COLOR TFT WITH AD BOARD
	COLOR TFT WITH PROCESSOR
	COLOR OPEN FRAME TFT DISPLAYS
TOUCH	RESISTIVE TOUCHSCREENS
	PROJECTED CAPACITIVE TOUCH SCREENS
CUSTOM	LCD PANEL DISPLAY CUSTOM
	LCD MODULE DISPLAYS CUSTOM
	COLOR FS-LCD DISPLAYS CUSTOM
OLED	PM OLED DISPLAYS
DIV	Divers Composants

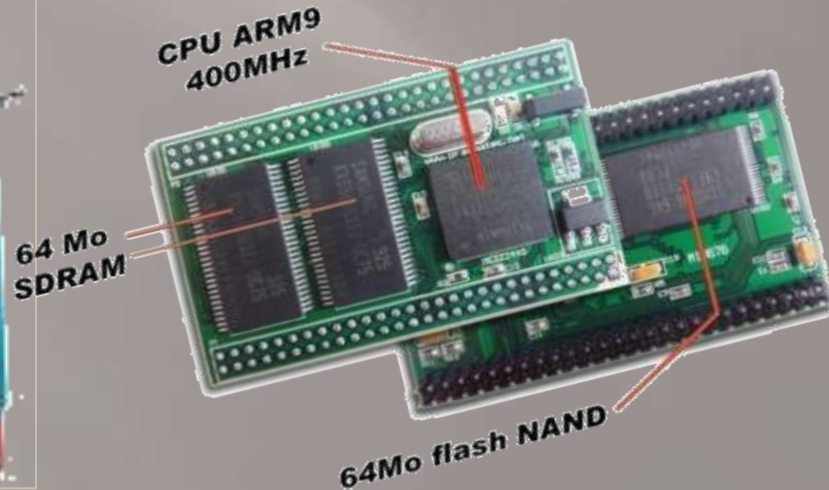




Part 2 : Electronic boards

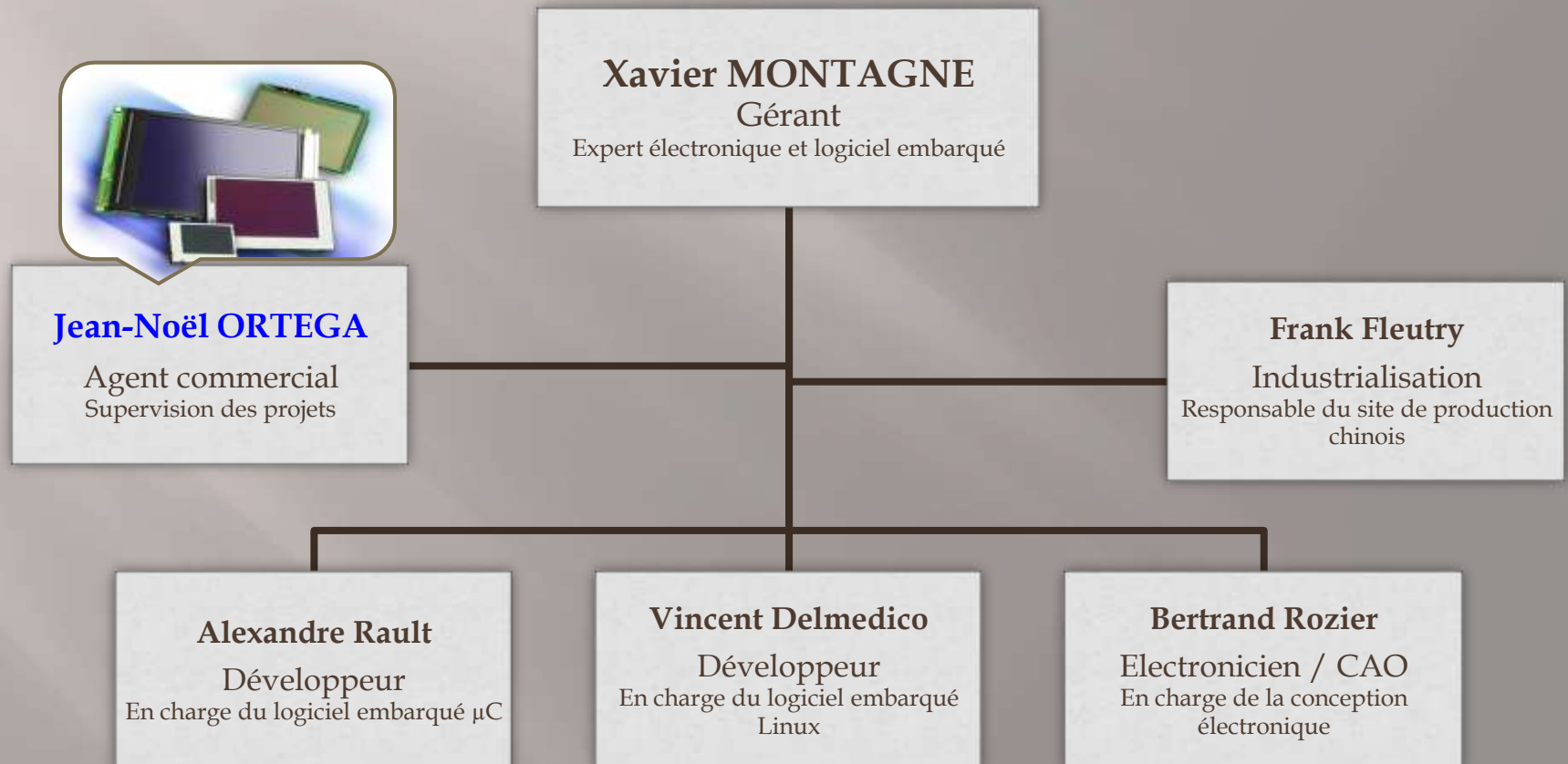
Pragmatec

Design and manufacture of custom electronic cards
Embedded Systems ARM / Linux



ORGANIZATIONAL CHART

Pragmatec is an engineering company located in Houilles, in suburb close to Paris, and composed of a team of 6 people:

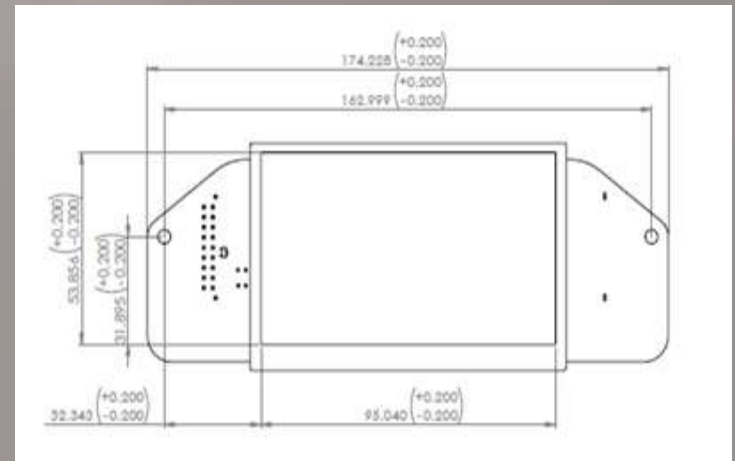


PROJECT TYPES « automotive » 1/2



ARM9/Linux 400MHz CPU with CAN interface, digital and graphic LCD.

- CAN bus V2.0B**
- real-time clock (RTC)**
- 1-16 inputs**
- 9V DC to 40V DC auto secure**
- communication bus (debug, update, ...)**
- USB host (USB key, Wifi, ...)**
- stereo audio input (MP3 player, smartphone, ...)**
- 16-bit stereo sound output 2x20W (alarm, welcome ...)**
- FM tuner, buzzer**
- activation LED dashboard**
- analog inputs (1000 points on the full scale)**
- Graphic LCD 4.3 inch 256,000 colors (480x272 pixels)**



PROJECT TYPES « automotive » 2/2



Realization of custom UI based on free, open-source modified without royalty.



- OS linux 2.6.28
- video controller 480x272 pixels at 100 frames / second
- Nano-X graphics library customized
- Manager CAN frames multithreaded
- management BMP and GIF (with transparency)
- Text size fixed or TRUETYPE (vector)
- anti-aliasing freetype
- Failover page graphic snapshot
- overlay graphics windows
- simultaneous processing of audio files (MP3, Wave, raw)
- backlight control software
- ability to display screens "diagnosis" (CANalyser)



PROJECT TYPES INDUSTRIAL



**Remote CPU with 400MHz
ARM9/Linux HF radio
communication interface and
wireless 2.4GHz 866MHz. USB,
Ethernet LEDs.**

**PIC18F4680 CPU for control of
furnace steelmaking. Housing
machined metal.**



PROJECT TYPES MILITARY



Modifying the kernel real-time control computer Leclerc tank



Realization of electronic cards for tactical simulator submarines nuclear attack.



Driving video recorder embedded in the Tiger helicopter



E-cards simulators missile long worn.

PROJECT TYPES AUTOMOTIVE



Implementation of the various software layers of electric vehicles: CAN bus, LCD, control, audio, ...

Realization of electronic equipment for the interior concept cars of the last video, touch screens, mood lighting, remote WiFi,

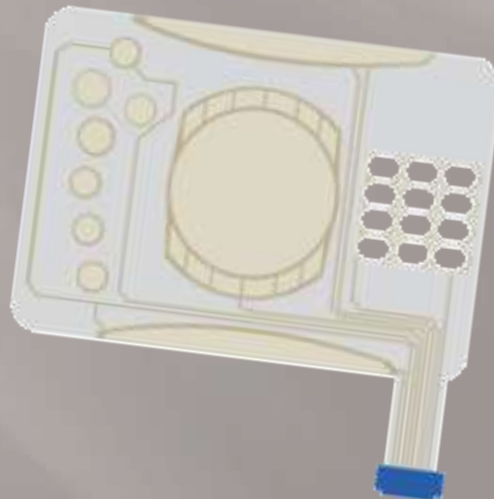


Automation of a manual gearbox, automated openings, automatic start and stop of the vehicle dashboard LCD.

Part 3 : Front panels

Milco

**Membrane switches, elastomeric capacitive
Support sheet metal, graphic design, screen printing, thermoforming**



milco

EXAMPLES



Micro resin polyurethane



High definition printing



serigraphy



keyboard elastomer



Varnishes and textures



electroluminescent lamp



electronic graphic



backlight

Part 4 : Injection

NEXEL



**Design and manufacture of molds
aluminum and plastic injection**

Contact : jn.ortega@ortelec.com +33.(0) 6 72 21 83 06

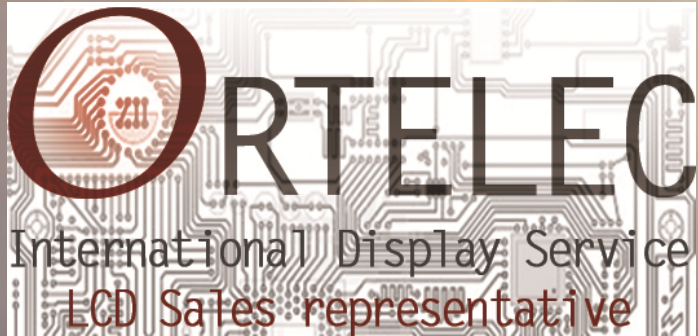
▶ **Injection parts**

Babyplast Presses up to 650 tons. We put all kinds of parts from 1 gram in any type of material: ABS, PC-ABS, polycarbonates, polyamides, polypropylene, PVC, UL-94 materials -V0.

All materials conform to RoHS and REACH.



Connecting Buyers
with China Suppliers



**THANK YOU FOR YOUR ATTENTION
WE REMAIN AT YOUR SERVICE - PLEASE CONTACT US**

Mail : jn.ortega@ortelec.com +33.(0) 6 72 21 83 06